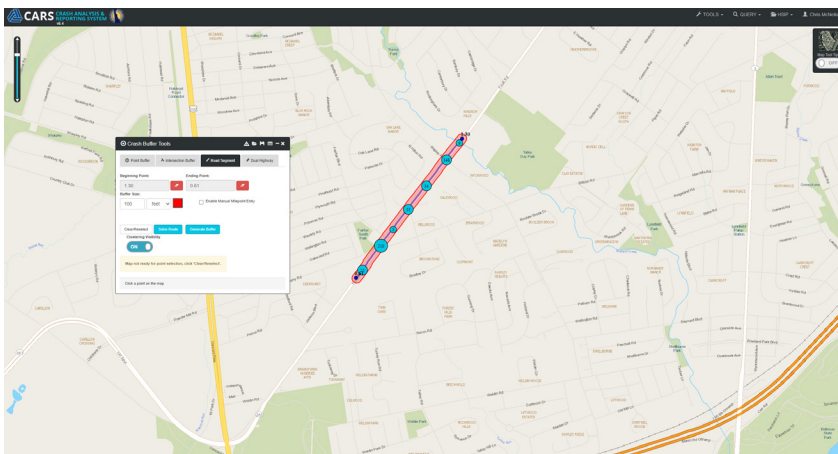




# Emphasis Area 9

## Traffic Records

Traffic safety data is the primary source of information about the environment, human behavior, and vehicle performance in a crash; therefore, the availability of timely, accurate, complete, uniform, integrated, and accessible traffic safety data is required to address safety problems and program limited resources. The effectiveness of informed decision making requires sound research, programs and policies, and is directly dependent on data availability and quality. Delaware's Traffic Records Coordinating Committee (TRCC) is the primary point of leadership, planning, policy setting, and accountability for Delaware's safety data. The TRCC was established and continues to meet on a regular basis to coordinate actions among state agencies and to commit the resources necessary for the integration and sharing of safety-related data.



| Advanced Query Search                            |                                                               |
|--------------------------------------------------|---------------------------------------------------------------|
| Date/Time                                        |                                                               |
| Crash                                            |                                                               |
| Persons                                          |                                                               |
| Vehicle                                          |                                                               |
| Roadway                                          |                                                               |
| Geographic Area                                  |                                                               |
| <b>Crash Identification</b>                      |                                                               |
| Complaint Number:                                | Classification: No Items Selected                             |
| Crash Types:                                     | Alcohol Involved: No Items Selected                           |
| <input type="checkbox"/> Pedalcycle              |                                                               |
| <input type="checkbox"/> Motorcycle              |                                                               |
| <input type="checkbox"/> Pedestrian              |                                                               |
| <b>Nature of Crash</b>                           |                                                               |
| First Harmful Event: No Items Selected           | Location of First Harmful Event: No Items Selected            |
| Primary Contrib Circumstances: No Items Selected | Manner of Impact: No Items Selected                           |
| State Property Damage: No Items Selected         | Clustering Visibility: <input checked="" type="checkbox"/> ON |
| <a href="#">Submit Query</a>                     |                                                               |

# Emphasis Area Strategies: Traffic Records



Strategy 1: Improve the timeliness, accuracy, completeness, uniformity, accessibility, and integration of data that is needed to identify priorities for transportation and traffic safety programs.

- 1.1 Maintain the Traffic Records Coordinating Committee (TRCC) with a multi-disciplinary membership to prioritize traffic records improvement projects.

---

- 1.2 Update the Delaware Traffic Safety Information System Strategic Plan to document specific activities, projects and goals to improve traffic records.

---

- 1.3 Develop a recurring training program for law enforcement to provide a better understanding of the purpose of crash data reporting and review common errors and omissions in crash reporting.

---

- 1.4 Investigate the integration of injury and crash outcome data from trauma centers with crash data to allow for targeted data analysis.

---

- 1.5 Continue efforts to integrate crash and citation data to allow for identification and prioritization of safety strategies.

---

- 1.6 Incorporate location information into citation data to provide an additional data source for location-based safety analyses.

---

- 1.7 Investigate the sharing of non-traditional safety related data between state agencies to improve outreach to vulnerable populations, improve interdiction of unsafe behaviors and overall reduce serious injuries and fatalities.